

Mobile or stationary, electrically or tractor driven

Optional Equipment:

- Maize feeder
- suction blower
- discharge auger
- bag attachment
- conveyor belt: 3 or 5 meter with bale breaker and self loading door

Outperforms the competition on all aspects effectiveness, capacity, durability and maintenance.



The Tub Driven by hydraulic motor or vary speed gearbox with adjustment controls to vary the tub speed.

STAALMEESTER

2 Coetzee Street, Hartbeesfontein, South Africa
P O Box 71, Hartbeesfontein 2600
Tel: 0027 - 18 - 431 0300 / 431 - 0693
Fax: 0027 - 18 - 431 0185
E-mail: staalmes@rmweb.co.za
Website: www.staalmeester.co.za

We reserve the right to change the design and specifications without notice.

STAALMEESTER

PRODUCTIVITY, COST EFFICIENCY AND SERVICE TO THE FARMER.

STAALMEESTER M-40 TUB GRINDER

Patent Number: 88/4020
2004/7270



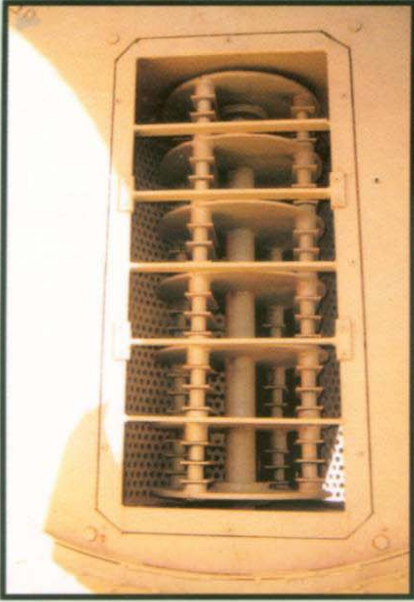
Discharge auger to transport large volumes of ground material effectively with built in magnet. Can mill directly into the feed mixer or wagon.



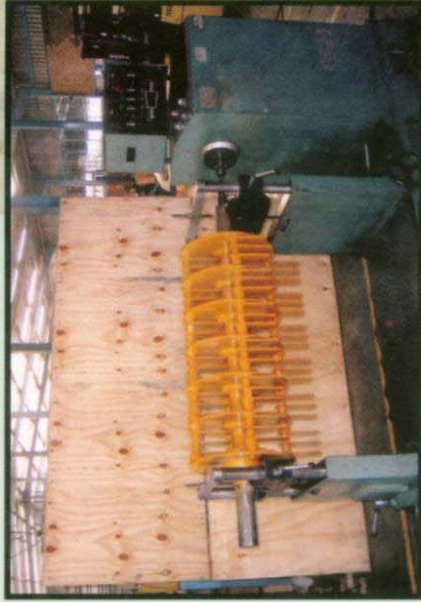
Bag attachment. The specially designed 8 bag attachment. Useful when grinding through small screen sizes for feedlots and contractors. Ensures maximum capacity.



Our patent M-40 prevents large chunks or slugs from getting into the mill and bogging it down



The heavy duty rotor with 72 staggered hammers. It can grind up to 12 bales of maize stalks and 7 bales of Smuts finger per hour through 25mm screens.



SPECIFICATIONS

Overall weight: 2450 mm	Rotor length: 2110 mm
Overall length: 2950 mm	Rotor shaft: 75 mm OD
Overall width: 2300 mm	Number of hammers: 72 hammers
Weight: 1980 kg	Hammer pins: 4
Tub diameter: 2288 mm	Hammer speed: 1800 - 2000 r.p.m
Floor space: 2248 mm	Hammer reversible: Yes
Tub depth: 1100 mm	Hammer swing diameter: 360 mm
Tub drive: Hydraulic motor	Grinding screen area: 1310 m ²
Or vary speed gearbox	Number of grinding screens: 2
Tub speed: 1-15 r.p.m	Screen sizes available: 10
Rotor weight: 412 kg	Transmission to rotor: 6 v-belt
	Transmission to auger: 2 v-belt
	PTO shaft: Overrunning clutch
	PTO r.p.m : 540



Display Area



Marketing Entrance